



Campus de Gualtar  
4710-057 Braga - P

**Universidade do Minho**  
Serviços de Comunicações

## **Connection to wireless network for events Configuration Guide**

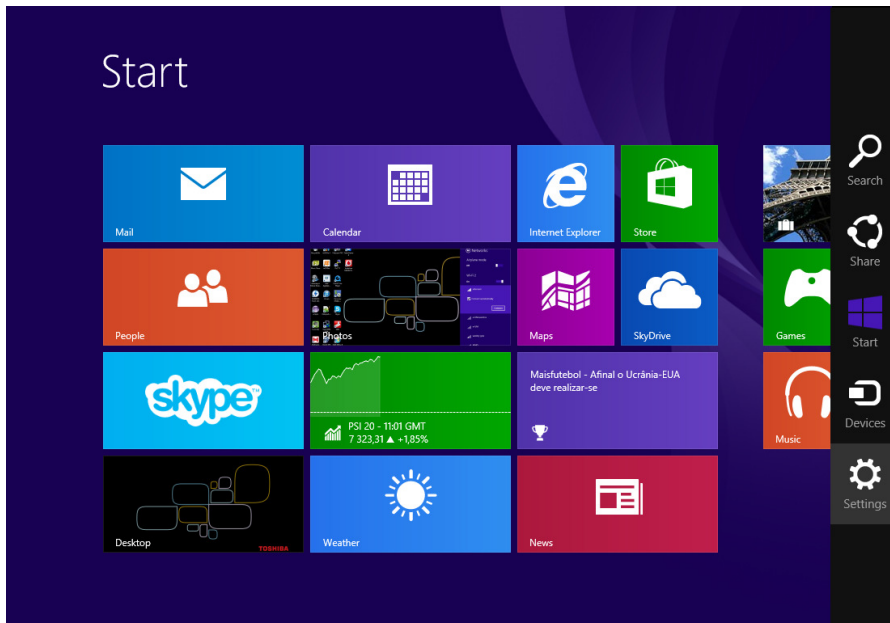
### **Table of Contents**

1. Windows 8 .....	2
2. Windows 7 .....	5
3. Windows Vista .....	7
4. MacOS .....	10
5. Ubuntu.....	13

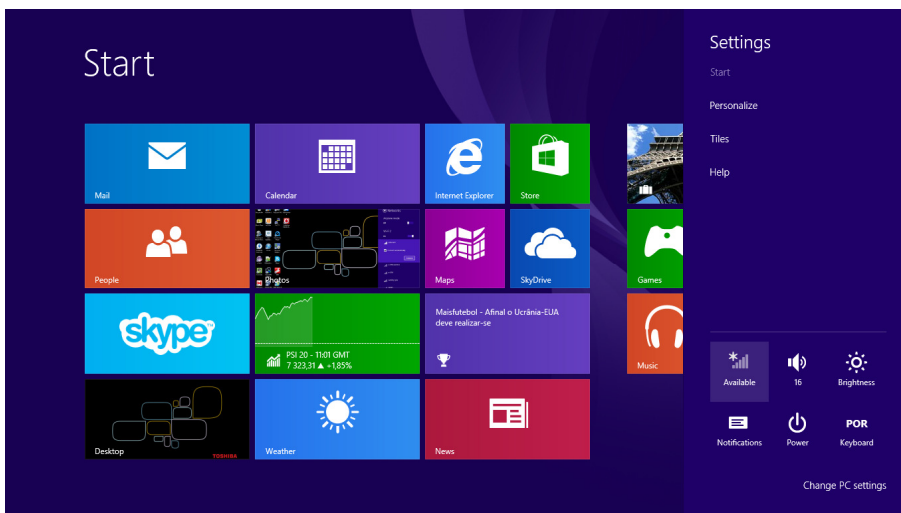
# 1. Windows 8

To have wireless connectivity to the Internet you must follow the following steps:

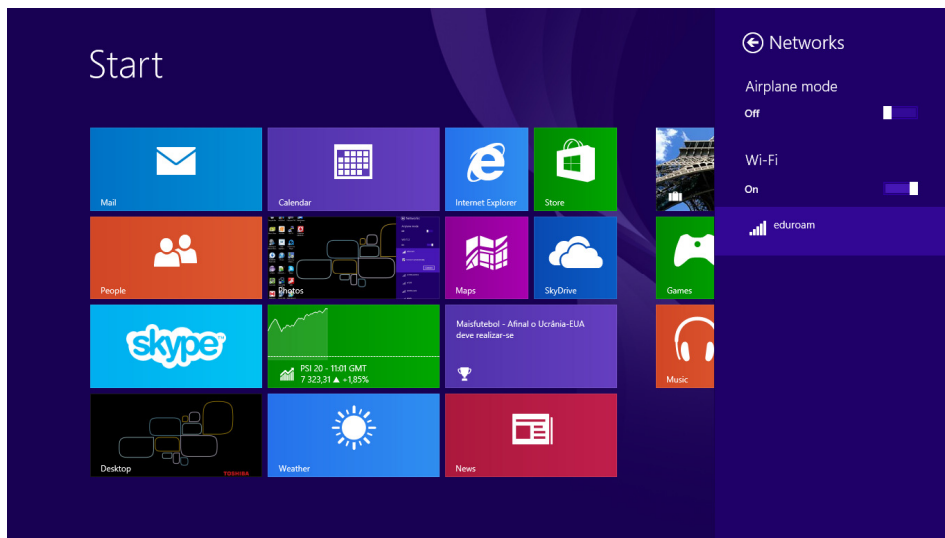
1. Move the mouse to the upper right corner of the monitor to access the sidebar.
2. Click on '**Settings**'.



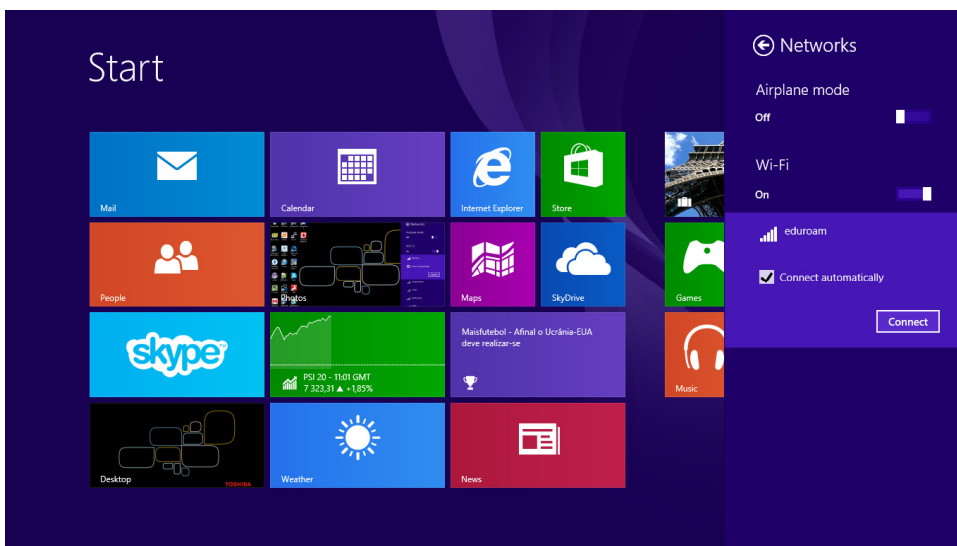
3. Click on the '**Available**' icon, represented by a group of vertical bars and an asterisk.



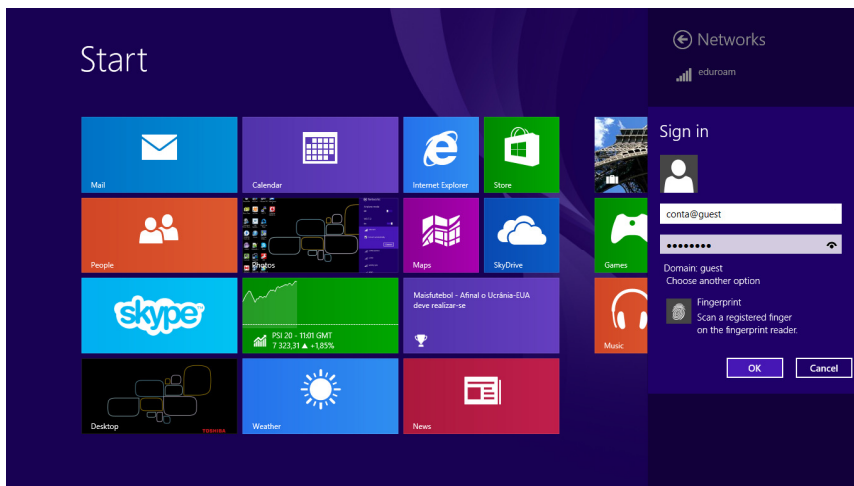
4. Select **eduroam** from the available networks list.



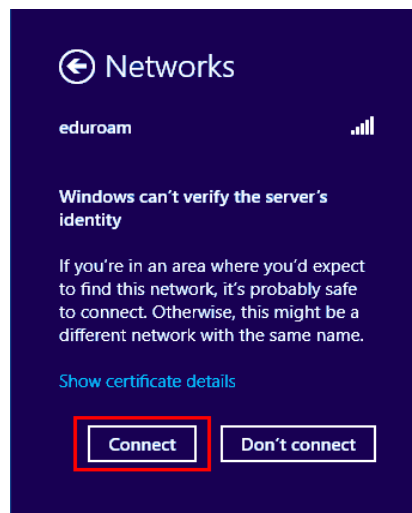
5. Activate the option '**Connect Automatically**' and click on the '**Connect**' button.



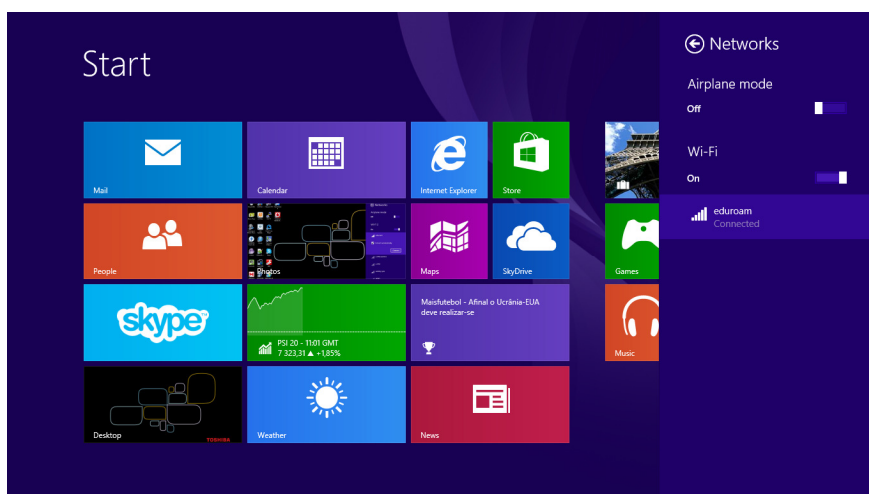
6. Insert your credentials: **username** and **password**.



7. If the following window appears click on '**Connect**'.



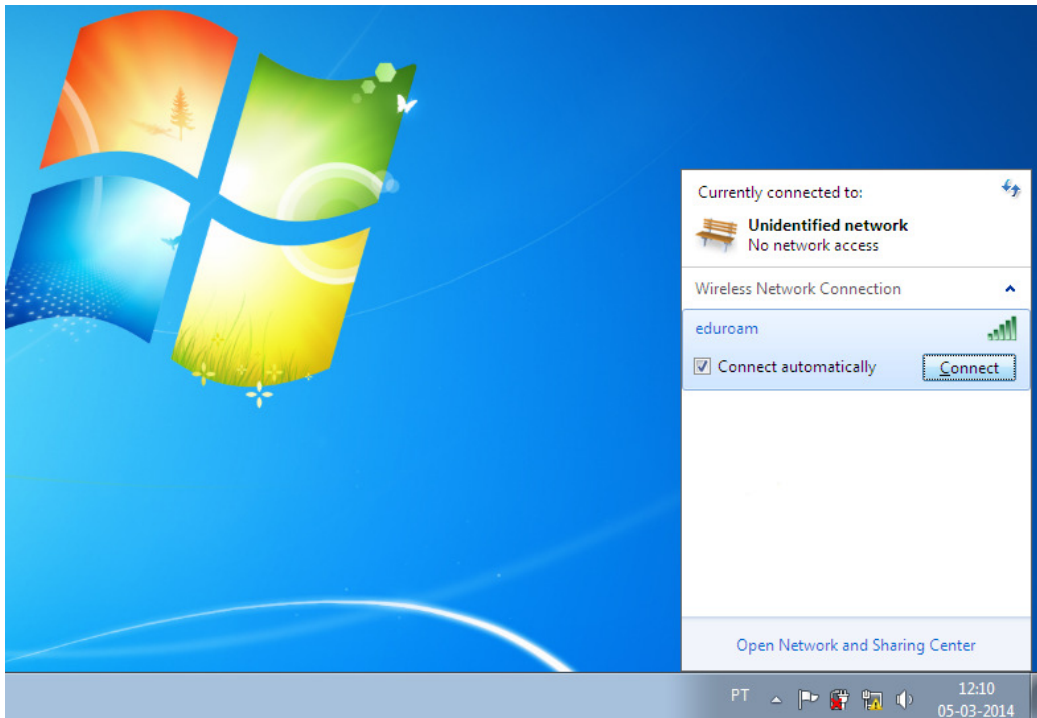
8. If everything is ok the wireless network connection will be successful.



## 2. Windows 7

To have wireless connectivity to the Internet you must follow the following steps:

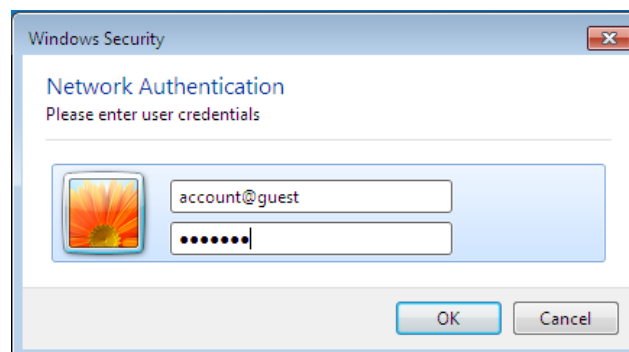
1. In the taskbar, click on the network icon and then click on the '**Connect**' button.



2. In the **Username** field put the account name for the event:

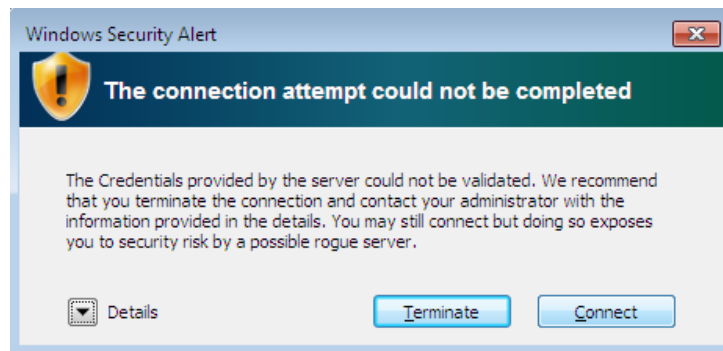
Example: **account@guest**

In the **Password** field put the account's password.

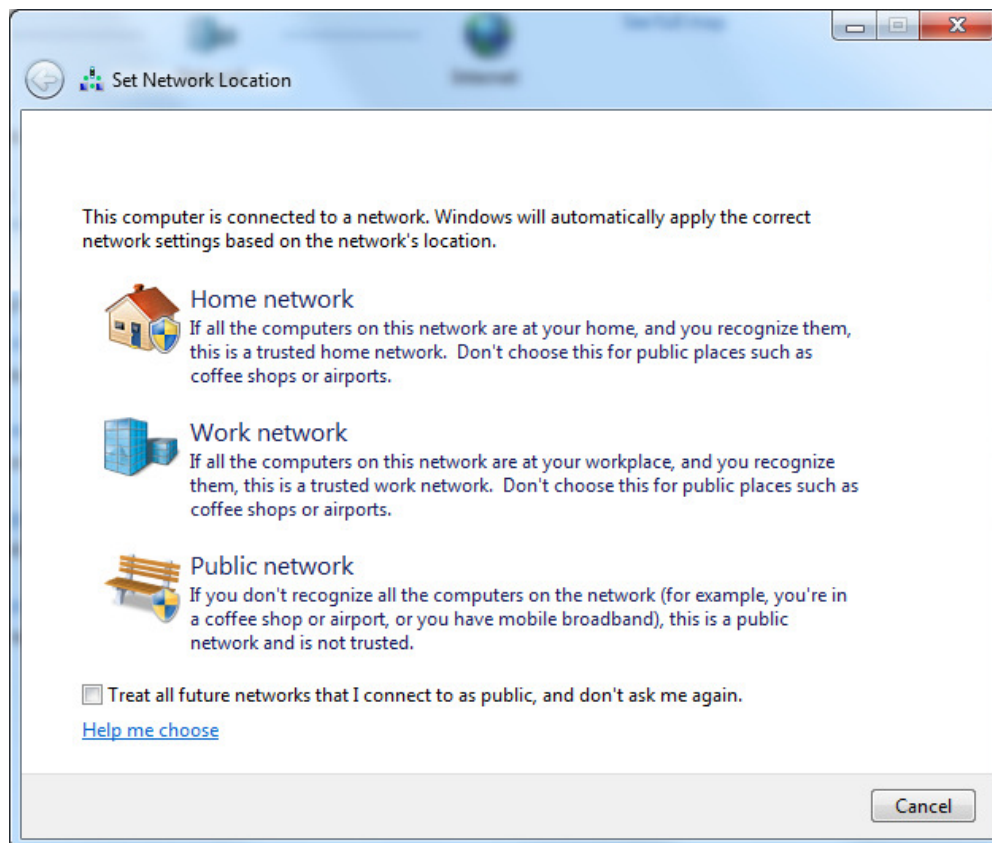


Insert your credentials again if you're asked to.

3. Confirm the server's certificate validity, choosing '**Connect**'.



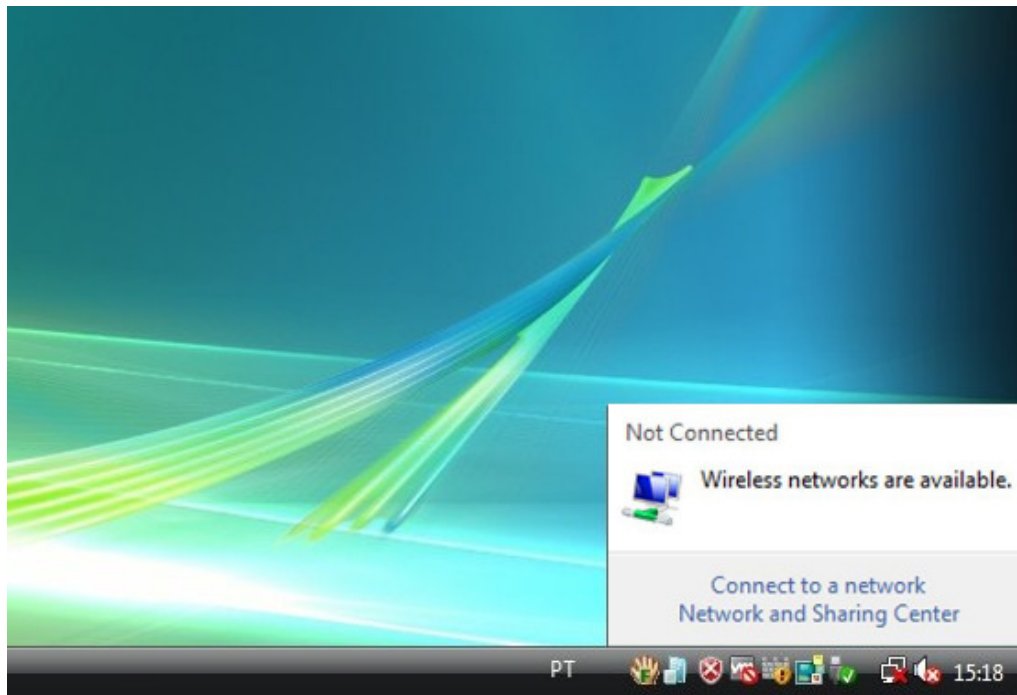
4. Set network location: **Public Network**.



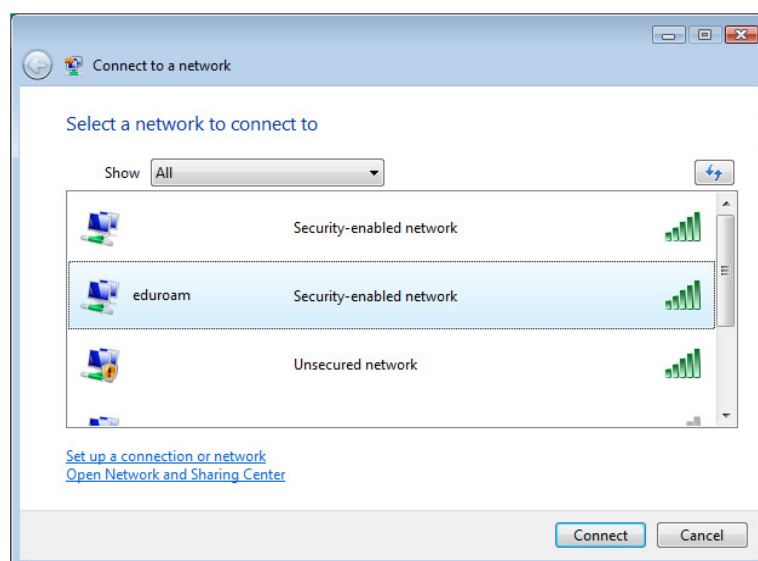
### 3. Windows Vista

To have wireless connectivity to the Internet you must follow the following steps:

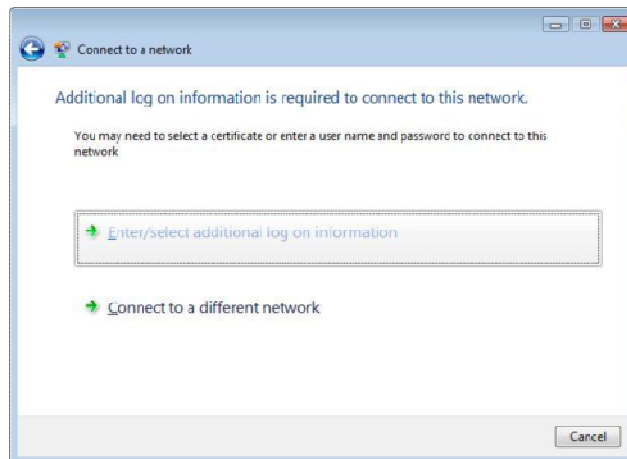
1. In the taskbar, click on the network icon and then click on '**Connect to a network**'.



2. In the '**Connect to a network**' window click on the **eduroam** network. After selecting **eduroam** click on the '**Connect**' button.



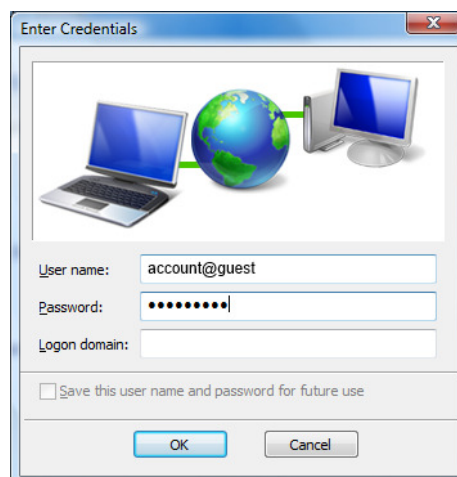
3. Click on **'Enter/select additional log on information'**.



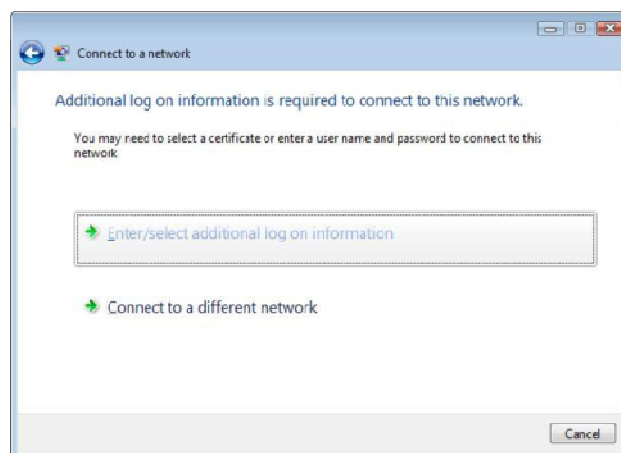
4. In the **Username** field put the account name for the event:

Example: **account@guest**

In the **Password** field put the account's password.



5. Click again on **'Enter/select additional log on information'**.



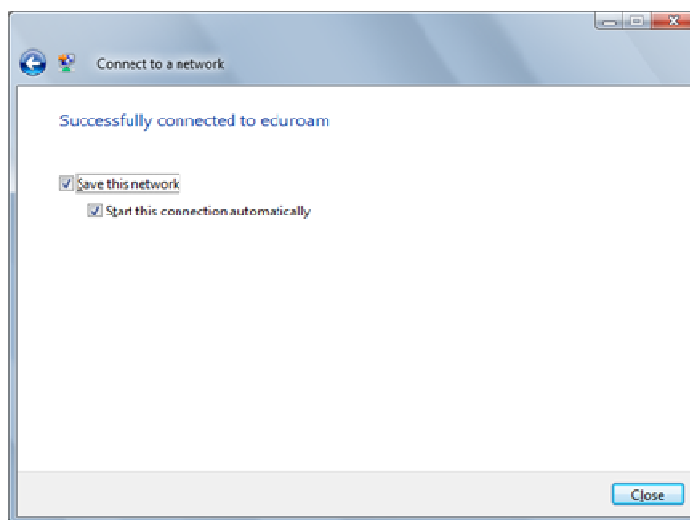
Insert your credentials again if you're asked to.



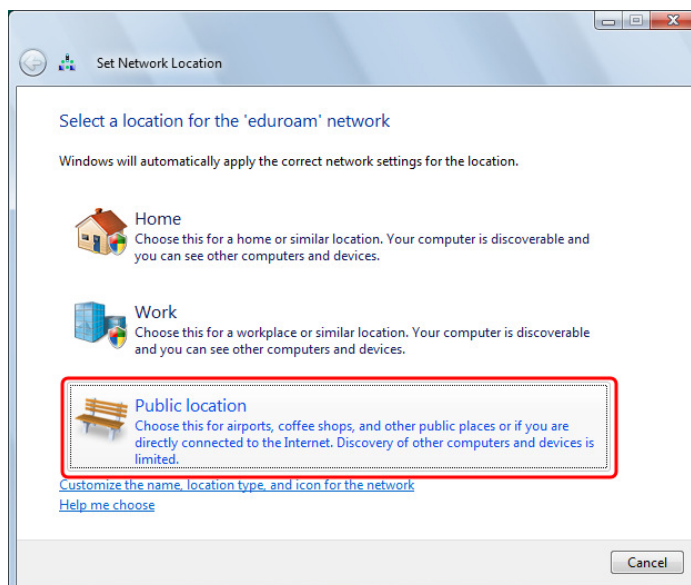
6. Confirm the server's certificate validity, choosing 'OK'.



7. Save your network connection.



8. Set network location: **Public Network**.



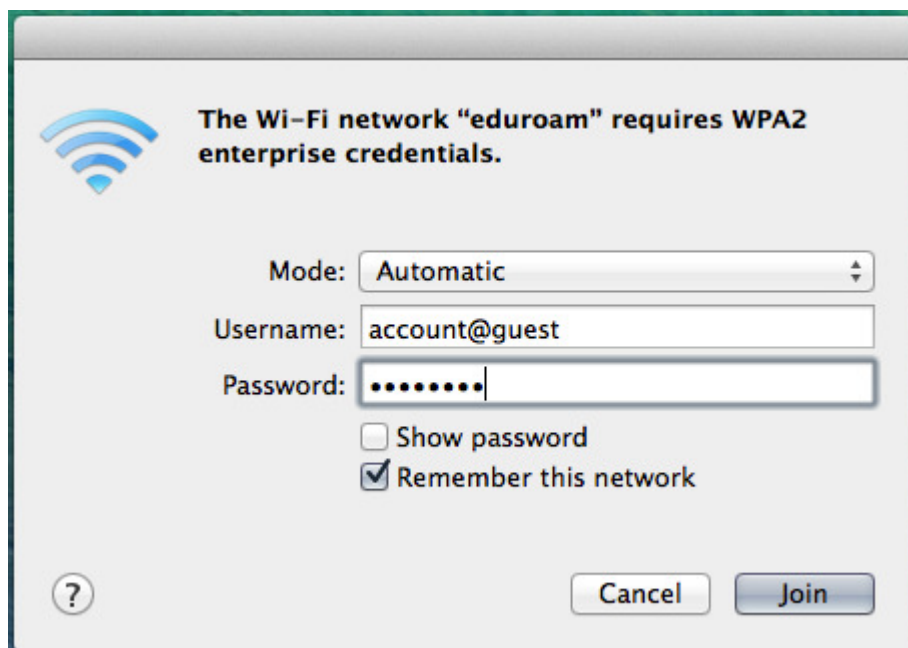
## 4. MacOS

To have wireless connectivity to the Internet you must follow the following steps:

1. Click on **AirPort**. Select the **eduroam** wireless network.

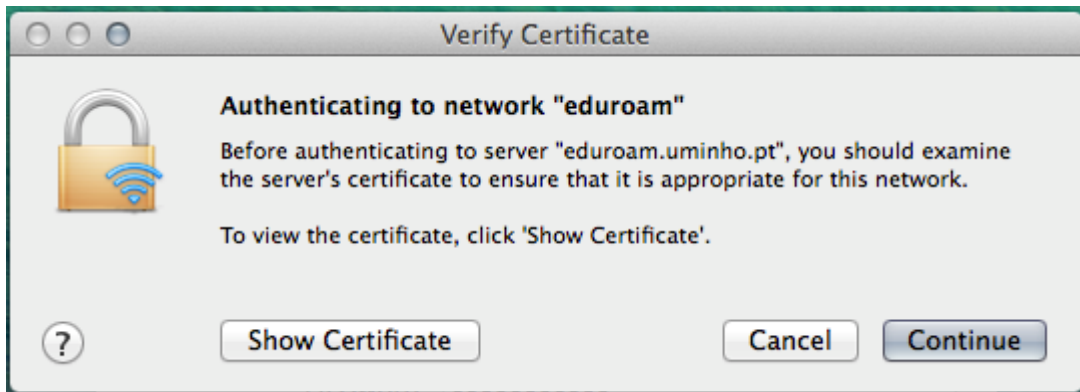


2. The following picture appears. Insert the credentials you were provided: **username** and **password**.

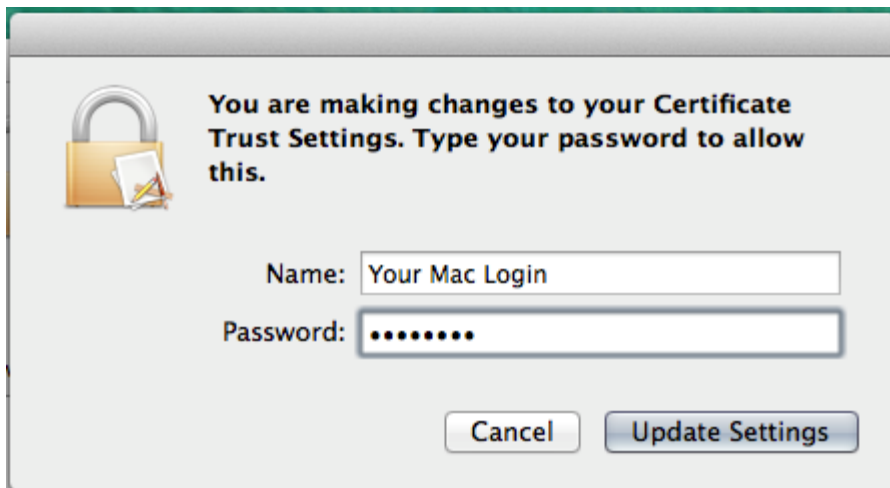


3. Click **Join**.

4. If the following dialogue box shows up, click on **'Continue'**.



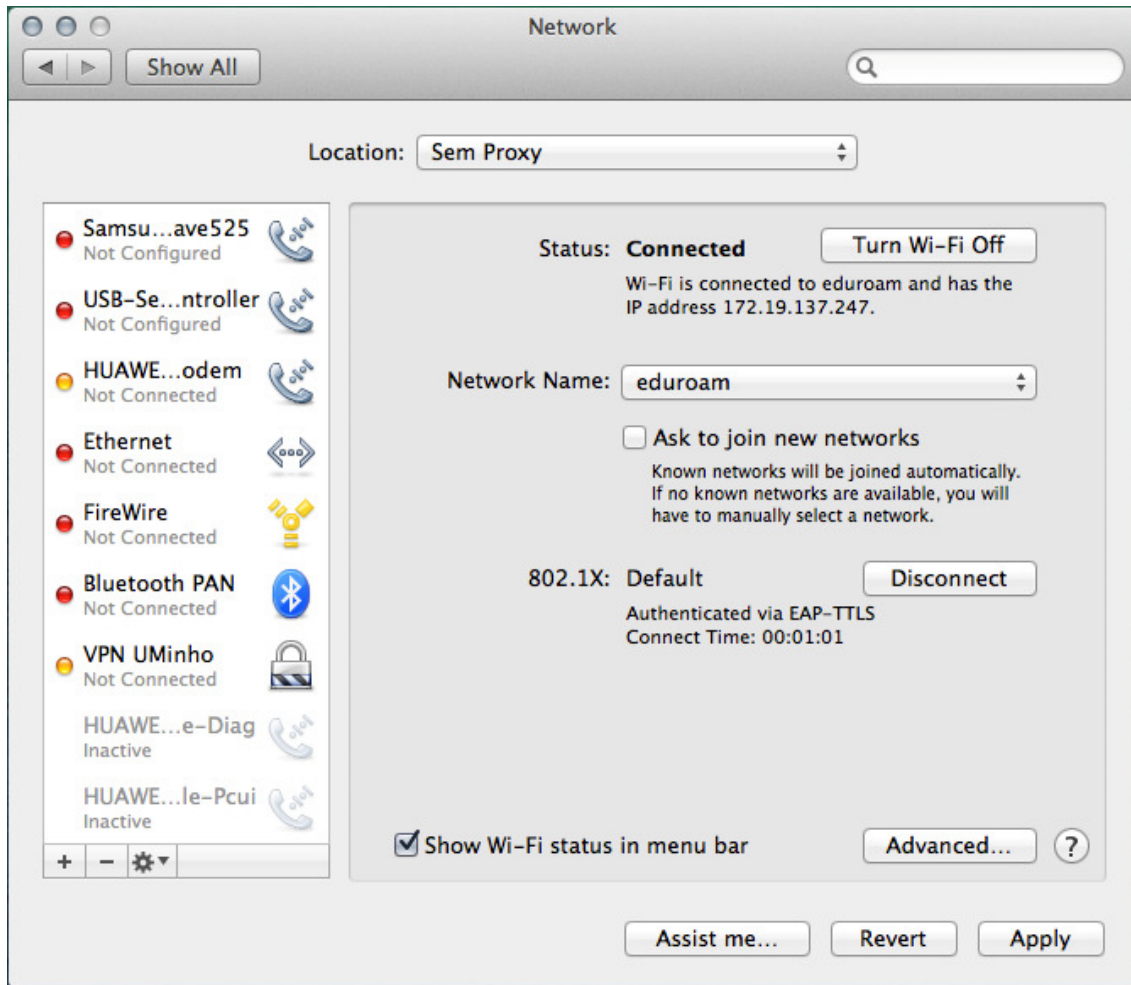
5. Insert the password of your Mac's username and click **'Update Settings'**.



6. Click again on **AirPort**. If all went well, you should see a picture similar to the next one.



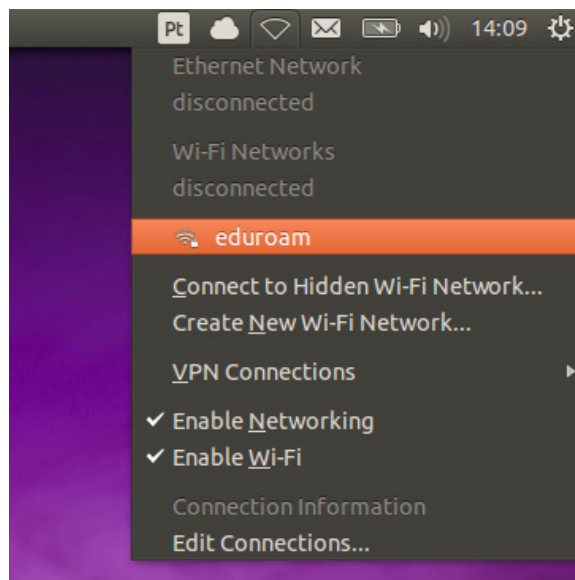
7. If you select '**Open Network Preferences...**', you should see something like the next picture (the IP address must begin with 172.xx.xxx.xxx), meaning that you are connected).



## 5. Ubuntu

To have wireless connectivity to the Internet you must follow the following steps:

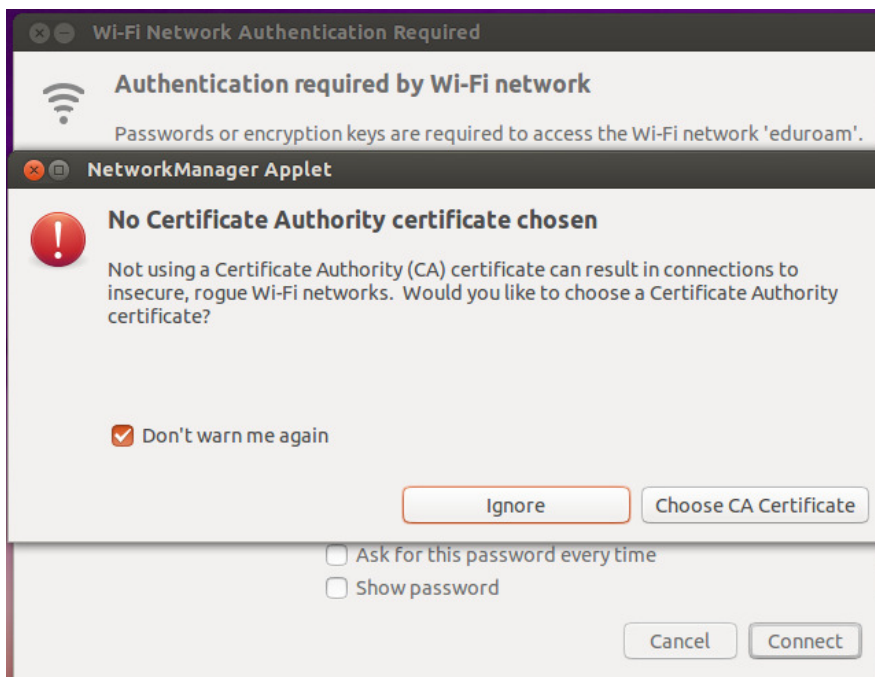
1. Click the network icon and select **eduroam**.



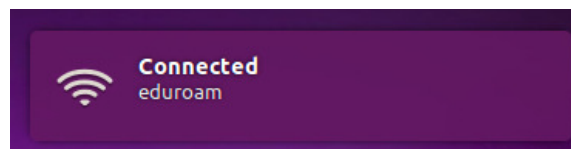
2. The following picture appears. Insert the credentials you were provided: **username** and **password** and click on '**Connect**'.



3. Click on **'Ignore'**.



4. If you're asked again insert the credentials you were provided: **username** and **password** and click on **'Connect'**.
5. It appears the confirmation of a successful connection to **eduroam**.



6. If everything went fine the connection is now established.

